



Factsheet N^o10: Comprehensive Service Package for Migrants in Nepal, as of 15 July 2012

Background

- HIV in Nepal characterized as concentrated epidemic; HIV prevalence of 0.30 percent among adult aged 15-49 years (2011).
- Approx. 50,200 people estimated to be living with HIV; four out of every five infections transmitted through sexual transmission (2011).
- People who inject drugs, female sex workers (FSW) and men having sex with other men (MSM) are the key populations at higher risk of spreading the epidemic due to exposed to or engage in risk behaviours.
- Key populations at higher risk accounted to 58% of all adult HIV infections (2011).
- Male labor migrants (particularly to India) and clients of female sex workers in Nepal acts as bridging populations.
- Targeted Intervention is a cost effective HIV prevention model for reaching people who are most at risk of HIV infection.

Source: NCASC 2012

Implementing Organizations

1. NCASC/Pool Fund
2. FPAN
3. Save the children
4. CARE
5. Saath-Saath Project

Figure 1: HIV prevalence among MLM

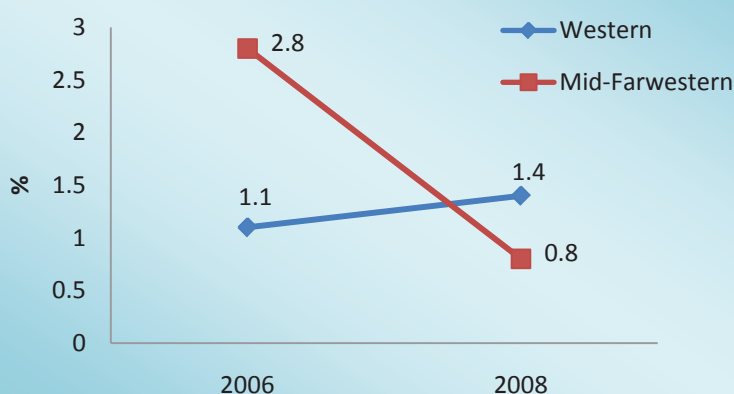


Table 1: Some Facts about Service Component of Targeted Intervention

Service Package

Comprehensive HIV prevention Package for key populations at higher risk and general population:

- Targeted interventions: IEC, BCC, Condom programming,
- HIV testing and counseling
- STI diagnosis and treatment

Stigma and discrimination reduction

Capacity development

Social Protection, human rights and impact mitigation

Community system strengthening

Source: NCASC, 2012

For Further Information Please Contact:

National Centre for AIDS and STD Control, Teku, Kathmandu

Phone: +977 - 1 - 4261 653, 4362 753, 4258 219

Email: data@ncasc.gov.np

Fax: +977 - 1 - 4261 406

Website: www.ncasc.gov.np



Government of Nepal
 Ministry of Health and Population
 National Centre for AIDS and STD Control
 Teku, Kathmandu

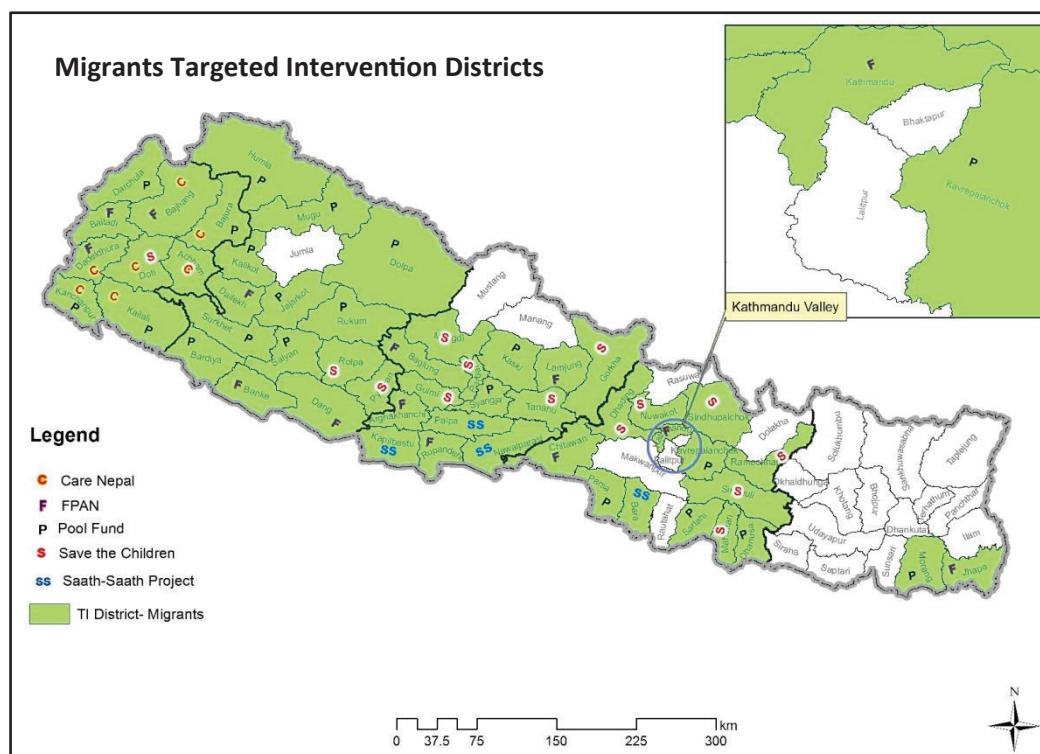


Figure 2: Map of districts with targeted intervention-Migrants

Table 2: Program Achievements as of 16 July 2011 -15 July 2012

Components	Poole d Fund	SSP (Apr- Jul 2012)	CARE	Global Fund	
				Save the children	FPAN
Reached through IBCC	350	4,980	1,16,394	70,707	71,405
No. of Condoms distributed	1,032	60,702	N/A	5,90,414	611,342
No. of persons receiving condoms	N/A	N/A	28,471	N/A	N/A
HIV testing and counseling	10	792	1,406	26,488	30,719
STI diagnosis and treated	34	1,031 (examine d)	776	16,805	21,467

Source: NCASC 2012

Challenges

- Rough geographical terrain with limited accessibility in the far west is a major constraint.
- Lack of specific service centers for HTC in Kalikot, Humla, Darchula, Mugu, Dolpa & non-functional in Jajarkot & Bajura
- Difficult to manage data at transit due to flow of huge number of migrants (at highway)
- Difficulty in continuum of services for migrants, being out of home for most of the year

For Further Information Please Contact:

National Centre for AIDS and STD Control, Teku, Kathmandu

Phone: +977 - 1 - 4261 653, 4362 753, 4258 219

Email: data@ncasc.gov.np

Fax: +977 - 1 - 4261 406

Website: www.ncasc.gov.np