



Factsheet 6: Antiretroviral Therapy (ART) and Care Services in Nepal, as of July 2014

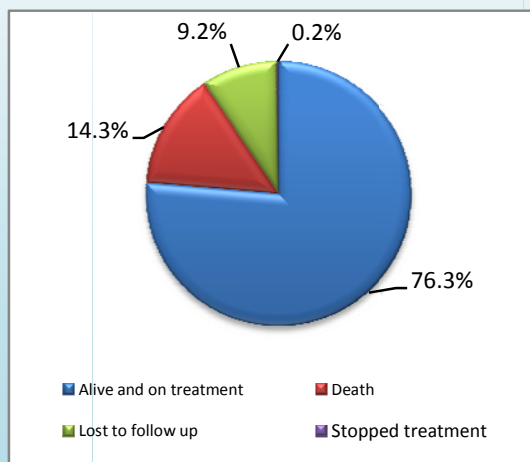
Facts and Figures on ART

- ✘ Anti-retroviral therapy (ART) started in Nepal in February 2004 from Teku Hospital.
- ✘ Government is providing free of cost ART service to all those in need.
- ✘ There are National ART Guideline and Standard Operating Procedure for the clinical management of HIV. The ART Guidelines were revised in 2012.
- ✘ There are 52 ART centers in Nepal in 45 districts.
- ✘ CD4 monitoring is available in 27 sites of Nepal. In addition, NPHL also provides viral load monitoring.

Table 1: Facts on ART, As of July 2014

Indicators	Value
✘ Total PLHIV on ART (As of July 2014):	9,818
✘ Patients on the 1 st line regimen:	6,269
✘ Patients substituted on the 1 st line	3,084
✘ Patients switched on the 2 nd line	93

Figure 1: Outcomes of ART Programme in Nepal, as of July 2014



Some Facts about Coverage of ART Programme

Among Total People with advanced HIV infection who are currently on ART, of which,

- Proportion of Adults: 92%
- Proportion of Children: 8%
- Proportion of Male: 53.0%
- Proportion of Female: 46.7%
- Proportion of Third gender: 0.3%

Percentage of people with advanced HIV infection who are alive and currently on ART after

- 12 months of treatment: 83.7%
- 24 months of treatment: 83.4%

Cumulative number of people with advanced HIV infection ever started and on ART, as of July 2014,

- PLHIV ever started ART: 12,899
- Currently on ART: 9,818

For Further Information Please Contact:

National Centre for AIDS and STD Control, Teku, Kathmandu

Phone: +977 - 1 - 4258219, 4261653, 4262753,

Email: data@ncasc.gov.np

Fax: +977 - 1 - 4215 149

Website: www.ncasc.gov.np

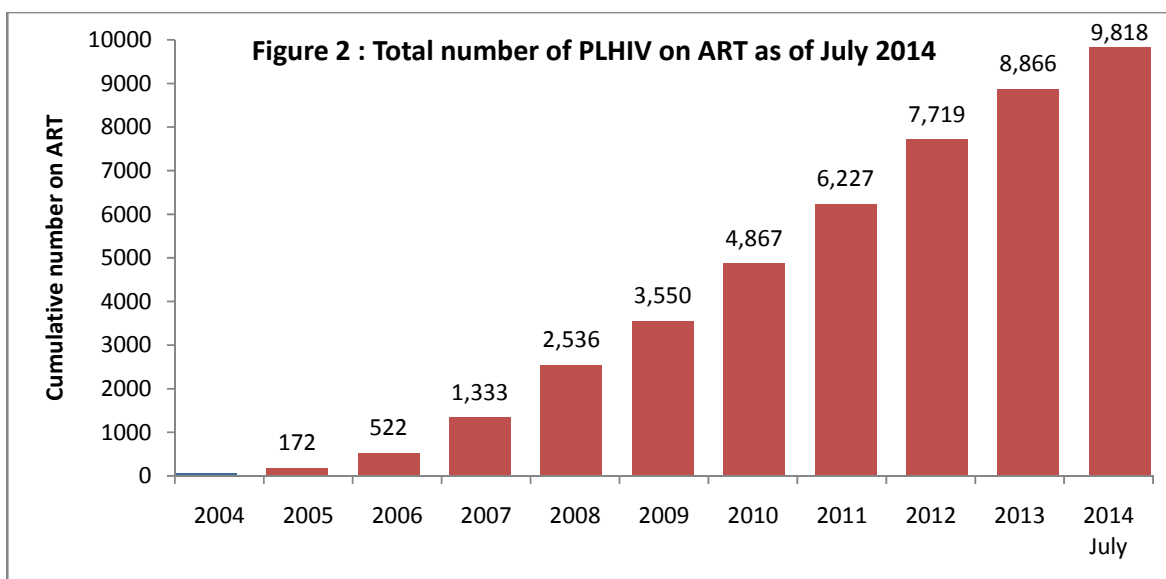


Government of Nepal
 Ministry of Health and Population
National Centre for AIDS and STD Control
 Teku, Kathmandu



Table 2: Trends of ART Profile of Nepal, as of July 2014

Indicators	2005/06 July	2007 July	2008 July	2009 July	2010 July	2011 July	2012 July	2013 July	2014 July
People living with HIV ever enrolled on ART (cumulative)	522	1,180	2,452	3,968	5,539	7,437	9,246	11,091	12,899
People with advanced HIV infection receiving ARVs (cumulative)	522	891	1,997	3,226	4,509	5,876	7,142	8,546	9,818
People lost to follow up (cumulative)	32	54	182	293	426	647	908	1,055	1,216
People stopped treatment	3	2	5	18	11	12	11	27	30
Total deaths (cumulative)	36	114	276	447	653	872	1,185	1,463	1,834



For Further Information Please Contact:

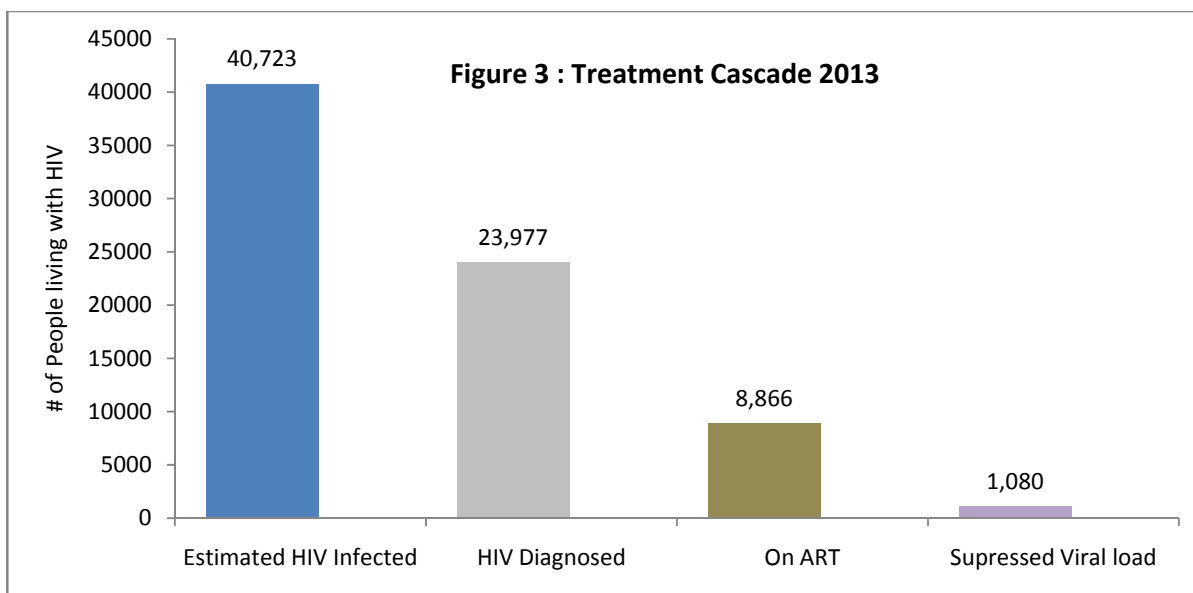
National Centre for AIDS and STD Control, Teku, Kathmandu

Phone: +977 - 1 - 4258219, 4261653, 4262753,

Email: data@ncasc.gov.np

Fax: +977 - 1 - 4215 149

Website: www.ncasc.gov.np



Community and Home Based Care (CHBC) Services in Nepal, 2014

- ⚡ Community and Home Based Care (CHBC) responds to the physical, social, emotional and spiritual needs of PLHIV and families from diagnosis to death and bereavement.
- ⚡ National package of CHBC as per National Guidelines on CHBC and Standard Operating Procedures 2011 consists of care and support to PLHIV for adherence, nutritional education, hygiene and sanitation, family planning, referral, linking with social services, emotional/spiritual support and counseling, infection prevention, and end of life care.

Some facts about CHBC (FY 2070/71)

Indicators	
Number of PLHIV who received CHBC services	9,783
Number of PLHIV referred for ART management	3,149
Number of PLHIV referred for management of opportunistic infections	1020

For Further Information Please Contact:

National Centre for AIDS and STD Control, Teku, Kathmandu

Phone: +977 - 1 - 4258219, 4261653, 4262753,

Email: data@ncasc.gov.np

Fax: +977 - 1 - 4215 149

Website: www.ncasc.gov.np



Government of Nepal
Ministry of Health and Population
National Centre for AIDS and STD Control
Teku, Kathmandu



Services of Community Care Centre (CCC) in Nepal, 2014

- ⌘ CCC is a short-term care homes catering to the needs of PLHIV and serving as a link between the hospital and home/community.
- ⌘ The key services by CCC include positive prevention, infection prevention, medical care, nutritional support, treatment literacy for adherence, care and support, and linkage to other social services.

Some facts about CCC (FY 2070/71)

Indicators	N
Number of CCC sites in Nepal, as of July 2014	58
Number of PLHIV received psycho-social counseling support	4,376
Number of PLHIV received nutritional support	3,979
Number of PLHIV receiving ART admitted to CCC	3,340
Number of PLHIV referred for management of opportunistic infections	2,051

For Further Information Please Contact:

National Centre for AIDS and STD Control, Teku, Kathmandu

Phone: +977 - 1 - 4258219, 4261653, 4262753,

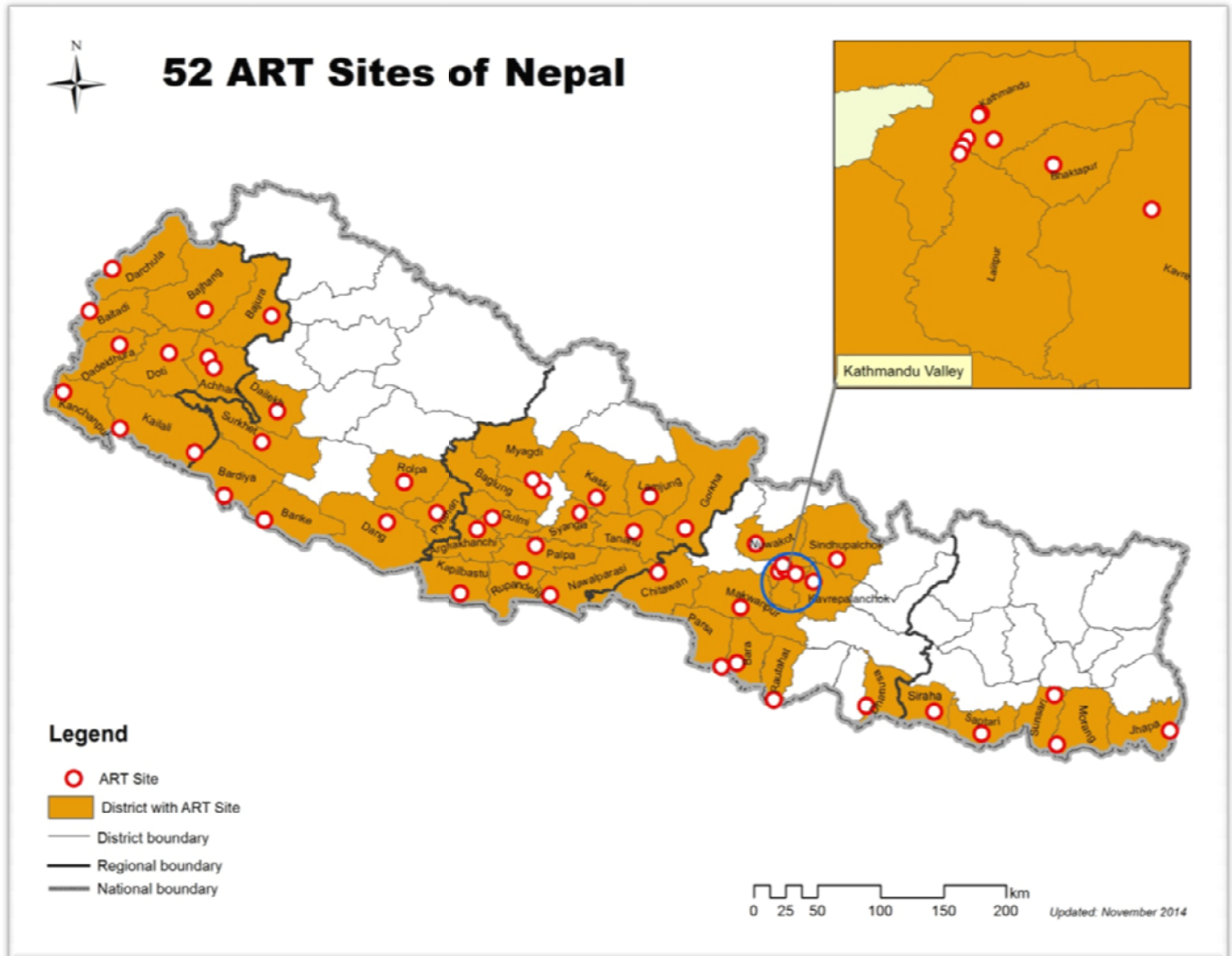
Email: data@ncasc.gov.np

Fax: +977 - 1 - 4215 149

Website: www.ncasc.gov.np



Map of ART Sites of Nepal



For Further Information Please Contact:

National Centre for AIDS and STD Control, Teku, Kathmandu

Phone: +977 - 1 - 4258219, 4261653, 4262753,

Email: data@ncasc.gov.np

Fax: +977 - 1 - 4215 149

Website: www.ncasc.gov.np