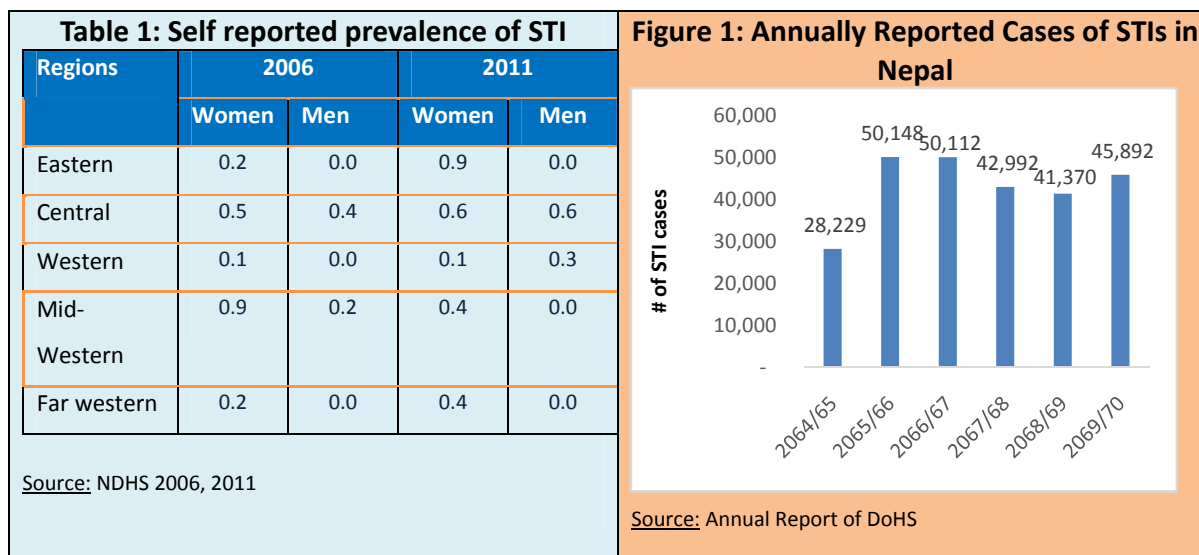




Factsheet 4: Diagnosis and Treatment of Sexually Transmitted Infection (STI) 2014

Some Facts about STI in Nepal

- ✎ Key Interventions for Management of STI in Nepal are targeted BCC interventions, condom promotion and distribution, diagnosis and treatment of STI (syndromic and etiological management) and referral services.
- ✎ Nepal has been following WHO recommended approach for the management of STIs in patients with recognized signs and symptoms.
- ✎ The first National STI Case Management Guideline was developed in 1995 and the latest revision was made in 2009.
- ✎ Repeated Integrated Biological and Behavioral Surveillance (IBBS) Surveys are the main source of information for STI prevalence among key population in Nepal.



For Further Information Please Contact:

National Centre for AIDS and STD Control, Teku, Kathmandu

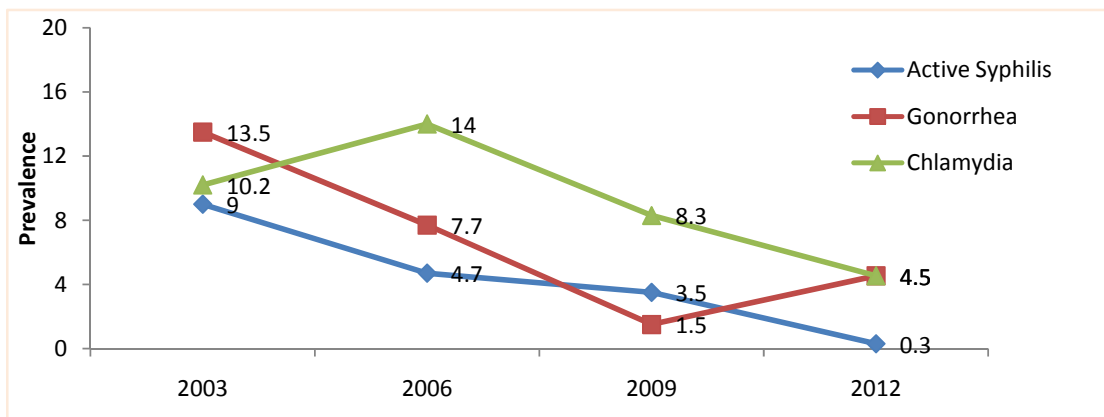
Phone: +977 - 1 - 4258219, 4261653, 4262753, **Email:** data@ncasc.gov.np

Fax: +977 - 1 - 4215 149

Website: www.ncasc.gov.np

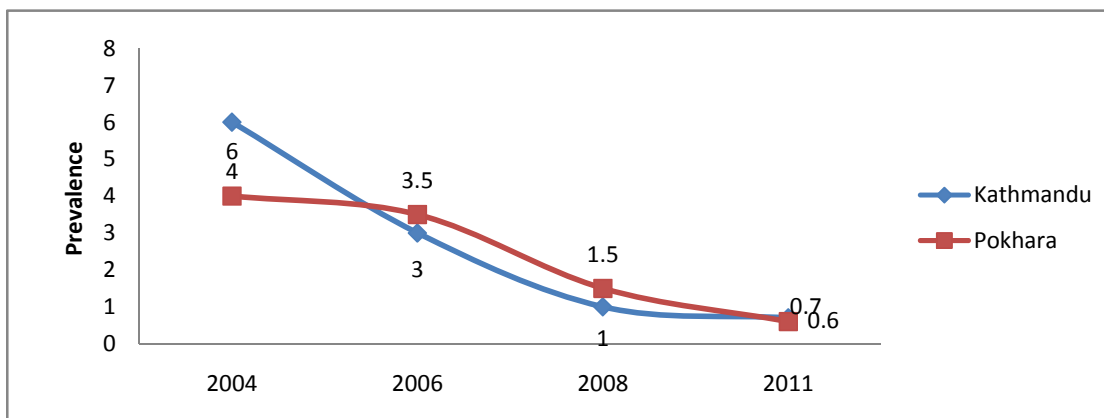


Figure 2: STI Prevalence among FSWs in 22 Terai Highway Districts



Source: Integrated Bio-Behavioural Surveillance (IBBS) Survey

Figure 3: Prevalence of Active Syphilis among FSWs



Source: Integrated Bio-Behavioural Surveillance (IBBS) Survey

For Further Information Please Contact:

National Centre for AIDS and STD Control, Teku, Kathmandu

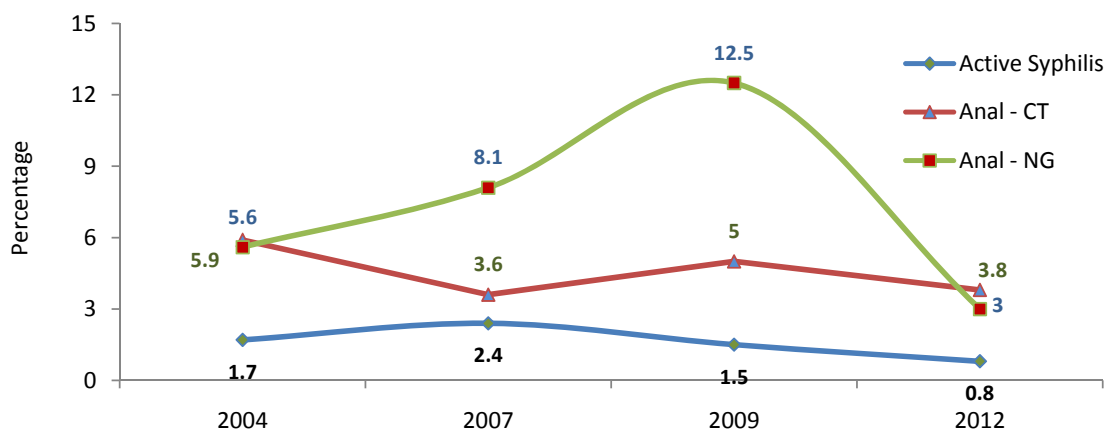
Phone: +977 - 1 - 4258219, 4261653, 4262753, **Email:** data@ncasc.gov.np

Fax: +977 - 1 - 4215 149

Website: www.ncasc.gov.np



Figure 4: STI Prevalence among MSM/TG in Kathmandu Valley



Source: Integrated Bio-Behavioural surveillance (IBBS) Survey

For Further Information Please Contact:

National Centre for AIDS and STD Control, Teku, Kathmandu

Phone: +977 - 1 - 4258219, 4261653, 4262753, **Email:** data@ncasc.gov.np

Fax: +977 - 1 - 4215 149

Website: www.ncasc.gov.np